

## 套餐 / SET MENU



### Set A

云吞面(干/汤) & 招牌油菜  
WONTON NOODLE (DRY/SOUP)  
& SIGNATURE VEGETABLES  
**\$12.80**



### Set B

云吞面(干/汤) & 炸云吞(5粒)  
WONTON NOODLE (DRY/SOUP)  
& CRISPY FRIED WONTON (5PCS)  
**\$12.80**



### Set C

云吞面(干/汤),  
炸云吞(3粒) & 招牌油菜  
WONTON NOODLE (DRY/SOUP),  
CRISPY FRIED WONTON (3PCS)  
& SIGNATURE VEGETABLES  
**\$12.80**

## 单点菜单 / A LA CARTE MENU



1 云吞面(干) . . . . . \$8.80  
WONTON NOODLE (DRY)



2 云吞面(汤) . . . . . \$8.80  
WONTON NOODLE (SOUP)



5 油菜面(干) . . . . . \$8.80  
VEGETABLE NOODLE (DRY)



6 油菜面(汤) . . . . . \$8.80  
VEGETABLE NOODLE (SOUP)



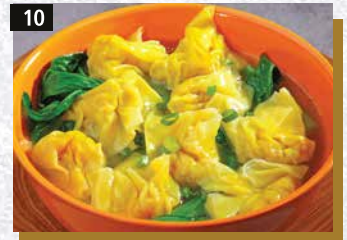
7 水饺面(干) . . . . . \$8.80  
DUMPLING NOODLE (DRY)



8 水饺面(汤) . . . . . \$8.80  
DUMPLING NOODLE (SOUP)



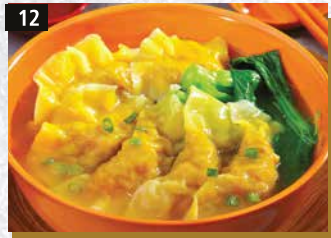
9 炸云吞(11粒) . . . . . \$10.30  
CRISPY FRIED WONTON (11PCS)



10 云吞汤(9粒) . . . . . \$9.30  
WONTON SOUP (9PCS)



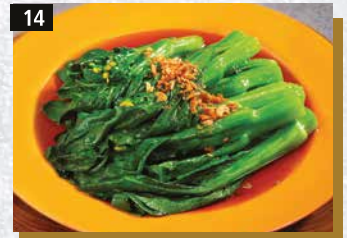
11 干捞云吞(11粒) . . . . . \$10.30  
DRY WONTON (11PCS)



12 水饺汤(6粒) . . . . . \$9.30  
DUMPLING SOUP (6PCS)



13 干捞水饺(7粒) . . . . . \$10.30  
DRY DUMPLING (7PCS)



14 招牌油菜 . . . . . \$9.30  
SIGNATURE VEGETABLES

## 另加 / ADD ON

云吞(3粒) . . . . . \$2.50  
WONTON (3PCS)

水饺(2粒) . . . . . \$2.50  
DUMPLING (2PCS)

叉烧 . . . . . \$2.50  
CHAR SIEW

菜 . . . . . \$2.50  
VEGETABLES

# 國記雲吞麵

KOK KEE WONTON NOODLE  
SINCE 1985

外带加\$0.30。价格包含消费税。照片仅供参考。最终解释权归本公司所有，如有任何变更恕不另行通知。  
Additional \$0.30 for takeaway. Prices are inclusive of prevailing GST. Photos are for illustration purposes only.  
The Management reserves the right to amend the above Terms and Conditions without any prior notice.